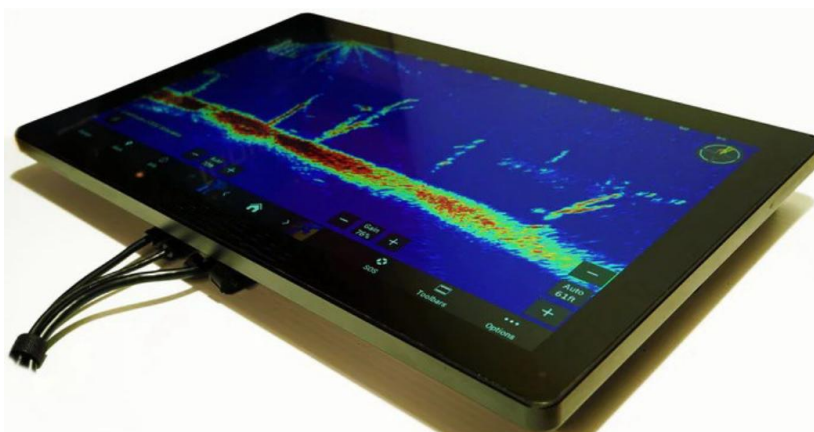


TDD-PTM-CFxxxWPM

15.6-21.5" Marine Waterproof Closed Frame PCAP Touch Monitors



Overview

The TDD Touch Monitors include Standard, Industrial (Open Frame Bezel-free | Rear Mount, Panel Mount, Closed Frame), Outdoor, Waterproof, Stainless Steel, Marine, Curved, Desktop POS, Commercial Displays, Medical and Custom types, delivers an industrial, reliable and cost-effective solution with outstanding image clarity & accurate touch response for OEMs & systems integrators. 7-98" sizes with rugged bezel, flat structure, high durability and versatility for Kiosks applications from Self-service, Automated Parking, Industrial Automation, Outdoor Control, Healthcare to Gaming.

Features

- Touch thru glass (Sunlight Readable&Anti-mist Optical Bonding) enabled with PCAP supports thickness up to 5mm
- Embedded design with Rugged TFT Panel, Sturdy Aluminum Enclosure with bolting holes&gimbal side mount kit
- IP67 Fully Enclosed Fanless Design with M12 Metal I/O Connectors, flexible mounting in any table, kiosk or cabinet

Specifications

Panel

Diagonal Size	15.6 - 21.5"(4:3 / 16:9 / 16:10), 39.5 - 109.22cm, Active matrix TFT LCD (LED)
Active Area (mm)	344 mm x 194 mm - 477.6 mm x 269.1 mm
Resolution	800 x 600 / 1024 x 600 / 1024 x 768 / 1280 x 800 / 1280 x 1024 / 1920 x 1080
Viewing Angle	Horizontal: 75 - 89° or 150 - 178° total / Vertical: 75 - 89° or 145 - 178° total
Number of Colors	16.7 million
Brightness (typical)	1500 nits
Response Time-total	8 - 25 (Typ.)(Tr+Td) ms
Contrast Ratio	500:1 - 1200:1
Input Video Frequency	Horizontal: 30 - 60 KHz / Vertical: 50 - 75 Hz

Touch

Touch Technology	PCAP (Projected Capacitive) - 10 Touch Capacity (Optional: Waterproof Firmware)
Surface Treatment	Water, Dust & Vandal proof; Optional: Anti-glare, Anti-fingerprint, Anti-smudge, Anti-bacterial
Supported OS	Windows / Android / Linux / Mac

Interfaces / Connectors / Controls

Video Interfaces	HDMI x1 / USB x1 for Touch; HDCP: Yes
Connectors & Controls	DC x1; LAN x1 & Remote Control (for OSD); Brightness Knob x1; On and Off Button x1

Power

Supply / Consumption: 100-240 VAC / 12VDC +/- 5%; 20W typical, 1.5W sleep, 0.5W off

Mechanical

Product Dimension / Weight (Unpacked / Packed) / Box Dimensions: Subject to change
VESA Mounting: 75 x 75 / 100 x 100mm

Environmental

Operating / Storage Temperature: -20°C to 75°C (except for some models)

Accessories

Power adapter/cable(4m), HDMI/USB cable(8m) w/ type-c convert, gimbal mount kits (opt.)

Others

MTBF / Warranty / Enclosure Color: 50,000 hours demonstrated / 1-year / black | silver
Ready for Use: 24/7; Marine grade(moisture, salt spray & fungus proof for mainboard)

* TDD (www.tddtouch.com, sales@tddtouch.com) reserves the right to change specifications without prior notice. 08